

MYT SUMMER CAMP INFORMATION



Please read carefully for information about Summer Camp including:

- Location, Hours, Drop-Off & Pick-Up
 - Daily Activities
 - What to Wear/Bring
- Friday's Showcase Performance

LOCATION / CAMP HOURS / DROP-OFF & PICK-UP

LOCATION: MOONLIGHT AMPHITHEATRE
- 1250 Vale Terrace Drive, Vista, CA
92084

DIRECTIONS: Take the Civic Center Drive exit off of HWY 78, go North. Turn Right on East Vista Way. Turn Right on Vale Terrace. Continue on Vale Terrace about 1/2 mile and turn left into Brengle Terrace Park. Turn left and continue around the tennis courts on Jim Porter Pkwy to the drop-off location indicated in the picture.



CAMP HOURS:

- Camp Hours are Monday through Friday from 9:00am to 3:00pm

WHAT TO EXPECT AT DROP-OFF:

- Drop-off will begin at 8:40am daily. (We will not be able to accommodate early drop-off.)
- We ask that drop-off be curbside due to limited parking. Parents/guardians will pull into the drop-off roundabout and continue through the line until our staff can assist you.
- If your camper feels uneasy and prefers to have a parent/guardian walk them to the check-in table, we ask that your vehicle is not left in an area that obstructs the traffic pattern. We will let you/your camper know their group color at check-in on the first day.

WHAT TO EXPECT AT PICK-UP:

- Afternoon pick-up will be staggered by group: RED, ORANGE, & PURPLE groups will be picked up starting at 2:40pm. YELLOW, GREEN & BLUE groups will be picked up at 3:00pm. PINK & WHITE groups will be picked up at 3:15pm. Please do not arrive prior to your camper's pick-up time so as to keep traffic as efficient as possible. *If you are picking up multiple campers, please arrive at the latest pick-up time that applies. *If your camper is in the 2:40pm pick-up group and you are unable to pick them up until 3pm, please let our staff know and we will accommodate you.
- Parents/Guardians will enter the roundabout and continue through the pick-up line.
- Please provide the name(s) and group color(s) of your camper(s) and we will radio for them to be brought up to your vehicle.

DAILY ACTIVITIES

GROUPS:

- Camp groups are broken up according to age (7-8, 9-10, 11-12, 13+).
- Each group will have 1 Camp Counselor who will be their chaperone for the entire week.
- The Camp Counselors move the groups between our Teaching Artist rotations and stay with the groups during breaks and lunch.

DAILY SCHEDULE:

- Camp A's theme will be Jukebox Musicals and Camp B's theme will be Disney Heroes & Villains.
- Each day, the students will receive instruction from Teaching Artists who are local theatre professionals.
- Our Teaching Artists are actors, choreographers, music directors, and production staff.
- Areas of instruction will be: Acting, Singing, & Dancing.
- There will also be art projects and theatre games.
- Students rotate through instructional blocks and will see 3 Teaching Artists every day.
- Throughout the week, we will be working towards a fun Friday performance where each group will perform two songs.

BREAKS & LUNCH:

- We will have 10 minute breaks between each teaching rotation.
- Each day, there will be a 45 minute lunch break.
- Please see the "What to Bring" section for further instructions about meals.
- Each group has a shaded area where they will take their breaks and eat lunch each day. Their break area will remain the same throughout the duration of camp.



WHAT TO WEAR & WHAT TO BRING

WHAT TO WEAR:

- Though we will provide ample shade with multiple canopies, the camp is entirely outdoors. Applying sunscreen prior to arrival is ideal. We recommend campers have sunscreen with them to reapply as needed.
- Please wear closed-toe shoes. No bare feet, sandals, or flip-flops.
- Please see below for daily dress-up days!
- You might need a sweatshirt, as it may be chilly in the mornings.

DAILY DRESS-UP DAYS (Optional):

- **MONDAYS** - DISNEY DAY - Dress in Disney-themed clothing or as your favorite Disney character.
- **TUESDAYS** - SAFARI DAY - Dress in animal print or as your favorite animal.
- **WEDNESDAYS** - BROADWAY DAY - Wear your favorite show shirt (can be Broadway or a show you've done!)
- **THURSDAYS** - PAJAMA DAY - Dress in pajamas or something comfy!
- **FRIDAYS** - GROUP COLOR DAY - Dress in your group color for our Friday performance!

WHAT TO BRING:

- Bring a pen or pencil.
- Please send water in a bottle that has the child's name on it.
- Bring snacks to eat during break time.
- Each camper should provide their own lunch daily.

INSTRUCTION:

- We will provide all materials including art supplies, sheet music, and acting scenes as needed.

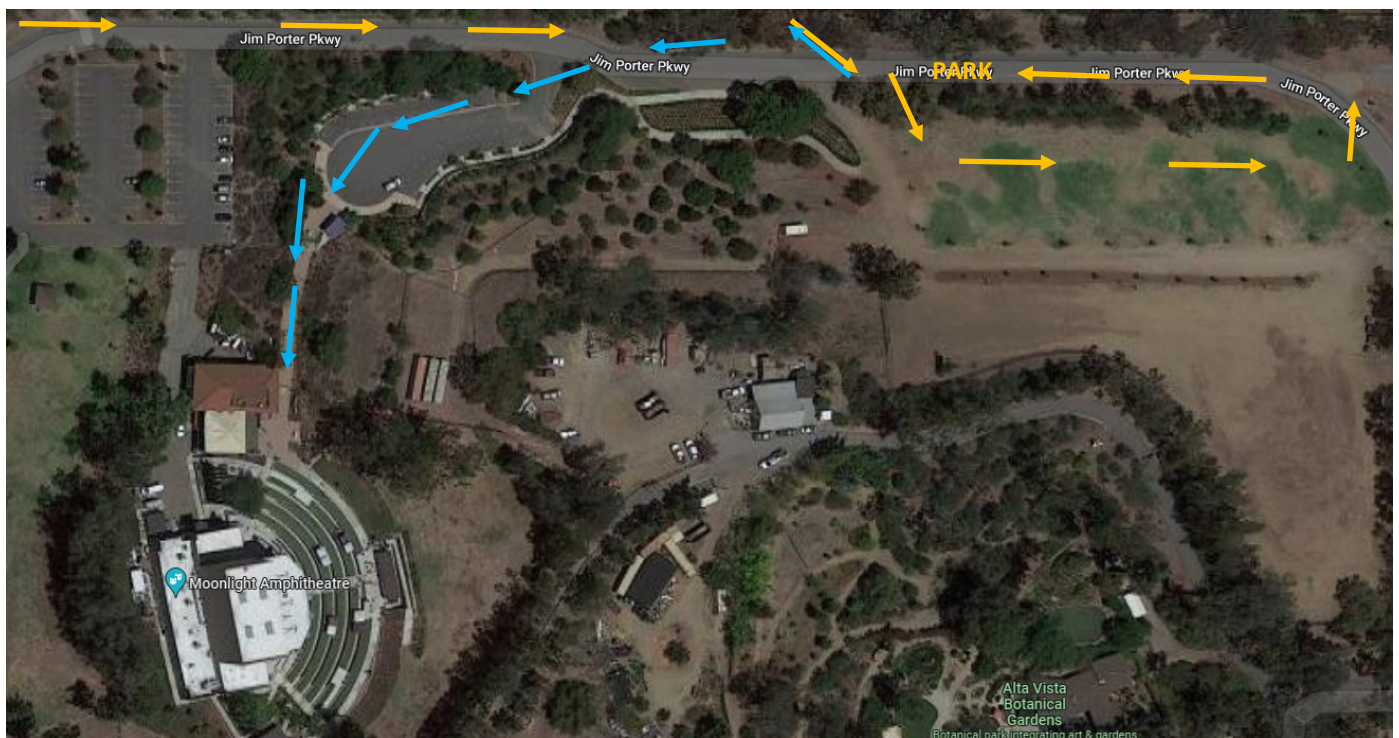
STORAGE:

- You can bring everything in a backpack. Each group has a designated area where their items will be stored. This area is where they will take breaks and eat lunch and they will have access to the area throughout camp.

FRIDAY SHOWCASE PERFORMANCE

- On Fridays, we put on a special free performance to showcase the hard work the campers put in all week.
- Each group will perform 2 musical numbers on stage at The Moonlight.
- You are free to invite family and friends to the performance.
- Park in the grass parking area and walk down to the drop-off area and enter the North Gate to walk down to the seating area.
- For weeks 1-3, the parking lot will be open at 12:00pm and the gates will open at 12:30pm. For week 4, the parking lot will open at 11:30pm and the gates will open at 12:00pm.
- There will be snacks and drinks available for purchase.

FRIDAY PERFORMANCE
Moonlight Amphitheatre
1250 Vale Terrace Drive, Vista, CA 92084
Weeks 1-3: 1:00- 2:00pm
Week 4: 12:30-1:30pm





CONTACT INFORMATION

Prior to the beginning of camp, we ask all parents/guardians to fill out an online health information form. This information will be maintained at camp by our Camp Director. In the unlikely event that there is an emergency, we will utilize the form to contact the emergency contact you provided. We also ask that each parent/guardian fill out an electronic media release form for their camper.

If you need to reach us for any reason during camp hours, if you will be dropping off your student late, or picking them up early, please contact us.

Camp Director Kate Thorvick (on-site daily):

mytsummercamp@gmail.com or (619) 800-1411

MCF Development & Education Director: Emma Nossal

emma@moonlightfoundation.com or (760) 630-7650

MOONLIGHT
youth theatre

A PROGRAM OF
MOONLIGHT CULTURAL FOUNDATION